

THIS WARMBOARD DESIGN CONSIST OF: SPECIFYING PANELS, TUBING, AND MANIFOLDS ONLY.

WARMBOARD SHOP DRAWINGS DO NOT INCLUDE THE FOLLOWING:

- ROOM BY ROOM HEAT LOSS CALCULATIONS
- PROPER DESIGN OF FLOW RATES AND REQUIRED WATER TEMPERATURES
- SIZING OF CIRCULATIONS AND DISTRIBUTION LINES
- COMPLETE ELECTRICAL CONTROL STRATEGY

WARMBOARD INC HIGHLY RECOMMENDS CONSULTING WITH A QUALIFIED RADIANT DESIGNER OR MECHANICAL CONTRACTOR FOR DOCUMENTATION.

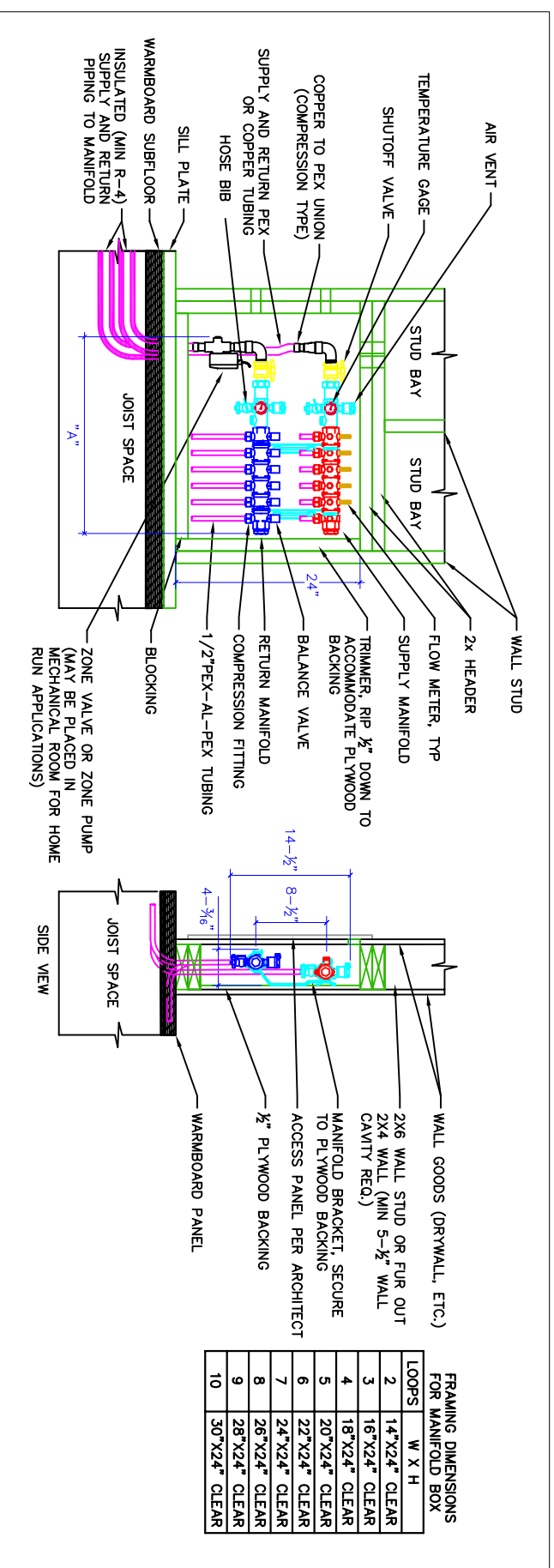
WHEN IN DOUBT, ASK!

Please review all installation instructions. If there are any questions or need for technical assistance call: 1 877 338-5493

| QTY | DESCRIPTION | NOTES |
|-----|--|-------------------|
| 2 | 1000' X 1/2" PEX AL PEX ROLL (1.1 1.2 1.3 1.4) & (1.5 2.1 2.2 2.3) | |
| 1 | 500' X 1/2" PEX AL PEX ROLL (3.1 3.2 3.3) | |
| | 250' X 1/2" PEX AL PEX ROLL | |
| | 2 PORT SUPPLY & RETURN MANIFOLD KIT | |
| 2 | 3 PORT SUPPLY & RETURN MANIFOLD KIT | Mani #2 = 2 Zones |
| | 4 PORT SUPPLY & RETURN MANIFOLD KIT | Mani #3 = 2 Zones |
| 1 | 5 PORT SUPPLY & RETURN MANIFOLD KIT | Mani #1 = 3 Zones |
| | 6 PORT SUPPLY & RETURN MANIFOLD KIT | |
| | 7 PORT SUPPLY & RETURN MANIFOLD KIT | |
| | 8 PORT SUPPLY & RETURN MANIFOLD KIT | |
| | 9 PORT SUPPLY & RETURN MANIFOLD KIT | |
| | 10 PORT SUPPLY & RETURN MANIFOLD KIT | |
| 22 | 1/2" COMPRESSION FITTINGS | |
| 6 | 24 VOLT ACTUATORS | |

1 SINGLE ZONE MANIFOLD INSTALLATION-NO ACTUATORS REQUIRED

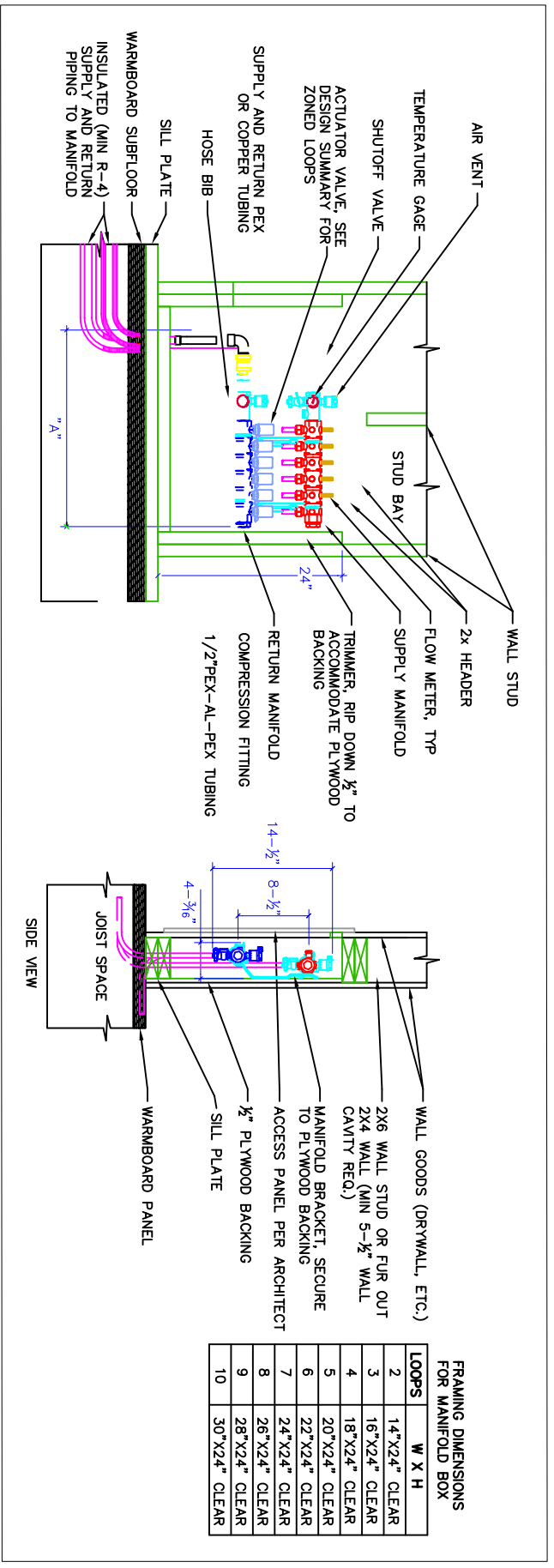
SCALE: NONE



| LOOPS | W X H |
|-------|---------------|
| 2 | 14"x24" CLEAR |
| 3 | 16"x24" CLEAR |
| 4 | 18"x24" CLEAR |
| 5 | 20"x24" CLEAR |
| 6 | 22"x24" CLEAR |
| 7 | 24"x24" CLEAR |
| 8 | 26"x24" CLEAR |
| 9 | 28"x24" CLEAR |
| 10 | 30"x24" CLEAR |

2 MULTI ZONE MANIFOLD INSTALLATION- ACTUATORS REQUIRED

SCALE: NONE



| LOOPS | W X H |
|-------|---------------|
| 2 | 14"x24" CLEAR |
| 3 | 16"x24" CLEAR |
| 4 | 18"x24" CLEAR |
| 5 | 20"x24" CLEAR |
| 6 | 22"x24" CLEAR |
| 7 | 24"x24" CLEAR |
| 8 | 26"x24" CLEAR |
| 9 | 28"x24" CLEAR |
| 10 | 30"x24" CLEAR |

MANIFOLD INSTRUCTIONS

"SIMPLY SMARTER RADIANT HEAT"



WARMBOARD, INC.
8035 SOQUEL DR. SUITE 41-A
APTOS, CA 95003
VOICE: (877)338-5493 FAX: (831)685-9278
WWW.WARMBOARD.COM EMAIL: PLANS@WARMBOARD.COM

DATE: 06/14/2006
SCALE: 1/4" = 1'
DRAWN: J.MCDONALD
REVIEWED: J.ZENSTARK
SHEET: 3 OF 3

| REVISIONS: | BY: |
|------------|-----|
| | |
| | |
| | |